



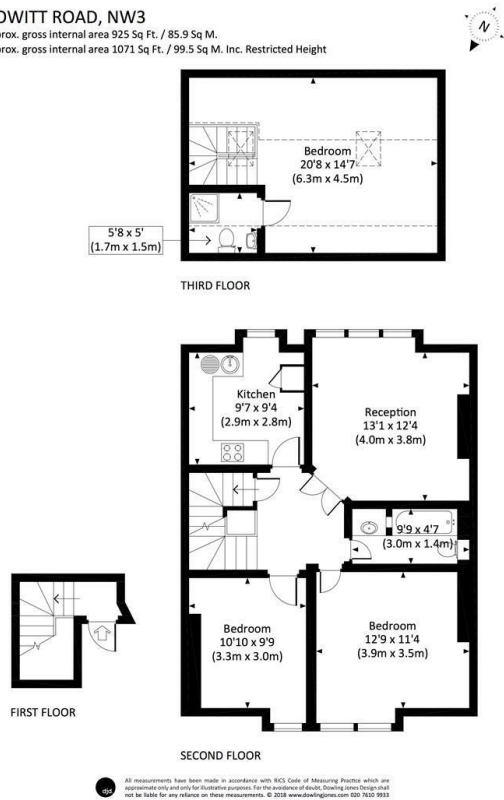
Belsize Park, London NW3 4LJ

£4,500 PCM

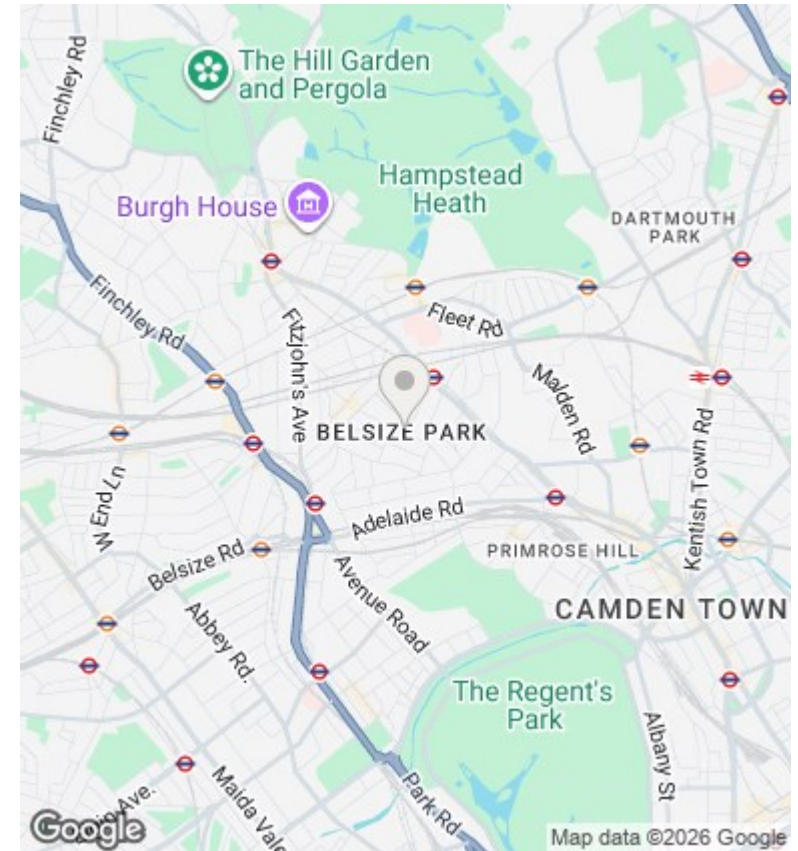
- Four bedrooms
- Student friendly
- Good location
- Managed by Chase Apartments
- Fully furnished
- Split over 2 floors
- Walking distance to Belsize Park Station and High Street
- Quiet street
- Wood flooring
- 1044 square foot

HOWITT ROAD, NW3

Approx. gross internal area 925 Sq Ft. / 85.9 Sq M.
 Approx. gross internal area 1071 Sq Ft. / 99.5 Sq M. Inc. Restricted Height



All measurements have been made in accordance with NCS Code of Measuring Practice which are approximate only and only for illustrative purposes. For the avoidance of doubt, Drawing Series Design shall not be taken for any reliance on these measurements. © 2018 www.drawingseries.com 020 7622 9933



Viewings

Viewings by arrangement only.
 Call 02077225022 to make an appointment.

Council Tax Band

F

EPC Rating:

D

Energy Efficiency Rating		Current	Potential
<i>Very energy efficient - lower running costs</i>			
(92 plus) A			
(81-91) B			82
(69-80) C			
(55-68) D		64	
(39-54) E			
(21-38) F			
(1-20) G			
<i>Not energy efficient - higher running costs</i>			
England & Wales		EU Directive 2002/91/EC	